

PORTABLE EQUIPMENT

N130-GL



**GRINDING
WHEELS
BALANCER**

VIBROMETER

TACHO



NEW



CEMB
BALANCING MACHINES

TESTING  **INDONESIA**

N130-GL PORTABLE EQUIPMENT



STANDARD ACCESSORIES

- No.1 accelerometer transducer 100mV/g
- No.1 magnetic base Ø 25mm
- No.1 probe
- No.1 transducer connection cable L 2m
- No.1 Photocell complete with upright and magnetic base
- No.1 Connection cable 2m for photocell
- Set of angle rules
- No.1 USB stick with manuals
- Battery charger with multiplug adapters
- Carrying case
- Micro USB Cable

OPTIONAL ACCESSORIES

- No.1 Connection cable 5m for transducer
- No.1 Extension cable 10m for transducer
- No.1 Extension cable 10m for photocell



The smart solution for Grinding wheel machines

Intuitive functions under full control

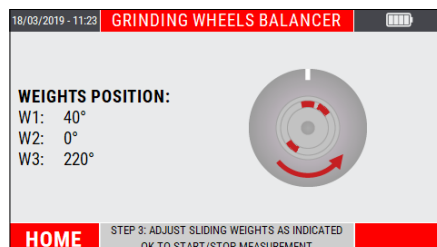


10 KHz Vibrometer and Machine Analyzer

- **4.3" color graphic display**
Very high luminosity and contrast for sunlight use
Wide view angle
- **Enhanced click keyboard**
Optimal tactile feedback
Designed for gloves use
- **Heavy duty and metallic connectors**
- **Fast measure**
- **Huge memory space**
14.8 GByte, expandible to 128 GByte
1000+ measures for each type
- **Easy reporting**
Screenshot display capture and save
Smart route data store
Output file: JSON format
Micro USB 2.0 data port

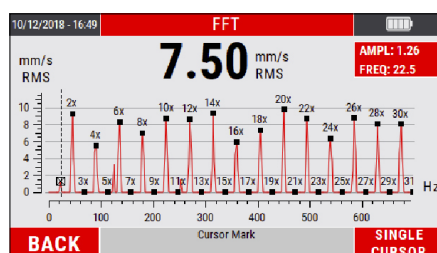


GRINDING WHEEL BALANCING



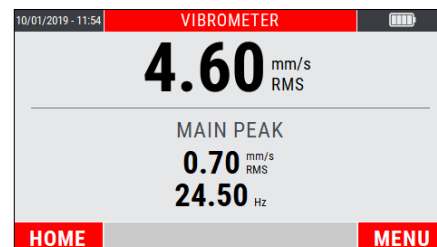
- Grinding balancing with 2 or 3 counterweights
- Graphic interface with real time correction
- Balancing Report

HIGH RESOLUTION FFT



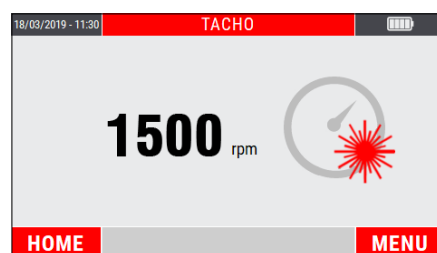
- Graphic zoom
- Peak cursors
- Autoscale feature
- List of main peaks

VIBROMETER



- Big readable characters
- Overall with main peak
- 1x fundamental with phase
- Speed rotation

TACHO

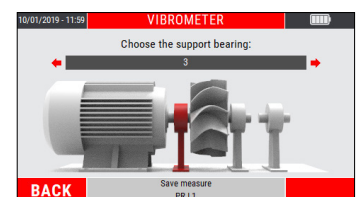


- Automatic rotation speed detection

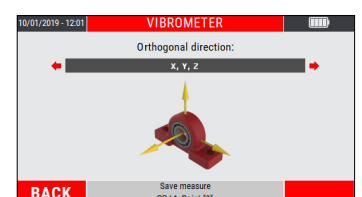
INTELLIGENT DATA SAVING



STEP 1: Enter the machine name



STEP 2: Select the bearing



STEP 3: Enter the X, Y or Z direction

TECHNICAL DATA

GENERAL CHARACTERISTICS

- Display: 4,3" colour LED-backlit TFT LCD (480 x 272 pixel)
- New EasyClick tactile keyboard with embossed keys
- Internal memory: 14,8 Gb (expandible to 128 Gb)
- Multi languages user interface

MEASUREMENT TYPES

- Effective value (RMS)
- Peak value (Pk)
- Peak-to-peak value (PP)

MEASURING PERFORMANCE

- Bandwidth: 1-10 KHz
- FFT Resolution: Max 3200 lines
- Tacho: Up to 250000 rpm

UNITS OF MEASUREMENT

- Acceleration: [g]
- Velocity: [mm/s] or [inch/s]
- Displacement: [µm] or [mils]
- Frequency: [Hz] or [Cpm]

INPUT

- 1 measuring channels IEPE sensor, accelerometer and velomitor. With a specify cable pluggable on a BNC for read any dynamic signal max. 10V PkPk
- 1 photocell channel (velocity and angle reference)
- 1 MicroUSB 2.0 port for data transfer
- 1 jack plug for battery charger

AMBIENT

- Temperature: from -20° to +70° C
- Air humidity: from 0 to 95% without condensate
- Protection: IP54

POWER SUPPLY

- Long Life Battery: > 8 hours based on typical use
- Charging time: 2,5 hours for 80% recharge
4 hours for 100% recharge
- Rechargeable 3100 mAh Lithium battery
- Power supply-battery charger for 100-240 V, 50/60 Hz (24 V, 1.5 A)

CARRYING CASE DIMENSIONS AND WEIGHT

- Approx. 370(L) x 300 (H) x 115(D) 1800 g



Office: Jl.Radin Inten II No 61 B Duren
Sawit, Jakarta Timur
www.testingindonesia.co.id



Phone: 021-2956-3045
Whatsapp: 0813-9929-1909 (Zulfikri)
Whatsapp: 0822-5870-6420 (Anto)
Whatsapp: 0821-1460-7782 (Faaji)
Email: sales@testindo.com

All the data and features mentioned in this catalogue are purely for information and do not constitute any commitment on the part of our company, which reserves the right to make any and all alterations it may consider suitable without notice.