

PORTABLE EQUIPMENT

# N130



VIBROMETER

MACHINE  
ANALYSER

SPECTRUM  
ANALYSER



NEW



# CEMB

BALANCING MACHINES



## STANDARD ACCESSORIES

- No.1 accelerometer transducer 100mV/g
- No.1 magnetic base Ø 25mm
- No.1 probe
- No.1 transducer connection cable L 2m
- No.1 USB stick with manuals
- Battery charger with multiplug adapters
- Carrying case
- Micro USB Cable

## OPTIONAL ACCESSORIES

- No.1 Photocell complete with upright and magnetic base
- No.1 Connection cable 5m for transducer
- No.1 Connection cable 5m for photocell
- No.1 Extension cable 10m for transducer
- No.1 Extension cable 10m for photocell



# The smart solution for vibration analysis

Intuitive functions under full control

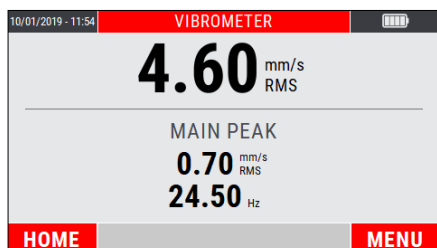


10 KHz Vibrometer and Machine Analyzer

- **4.3" color graphic display**  
Very high luminosity and contrast for sunlight use  
Wide view angle
- **Enhanced click keyboard**  
Optimal tactile feedback  
Designed for gloves use
- **Heavy duty and metallic connectors**
- **Fast measure**
- **Huge memory space**  
14.8 GByte, expandible to 128 GByte  
1000+ measures for each type
- **Easy reporting**  
Screenshot display capture and save  
Smart route data store  
Output file: JSON format  
Micro USB 2.0 data port

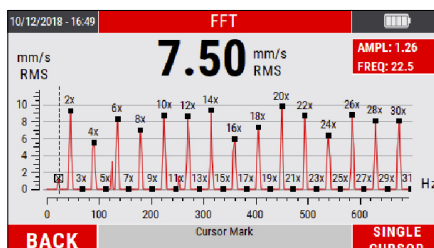


## VIBROMETER & TACHO



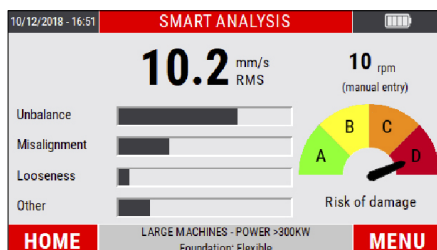
- Big readable characters
- Overall with main peak
- 1x fundamental with phase
- Speed rotation

## HIGH RESOLUTION FFT



- Graphic zoom
- Peak cursors
- Autoscale feature
- List of main peaks

## SMART ANALYSIS



- Machine troubleshoot at a glance
- Vibration root cause identification
- Step by step according ISO10816-3
- Automatic speed detection

## BEARING ANALYSIS

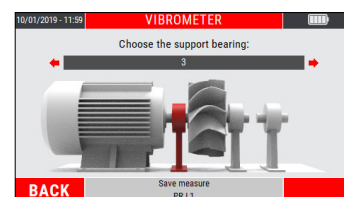


- Based on envelope algorithm
- Bearing condition evaluation
- Store CBA value for trend analysis and predictive maintenance

## INTELLIGENT DATA SAVING



STEP 1: Enter the machine name



STEP 2: Select the bearing



STEP 3: Enter the X, Y or Z direction

# CEMB

## GENERAL CHARACTERISTICS

- Display: 4,3" colour LED-backlit TFT LCD (480 x 272 pixel)
- New EasyClick tactile keyboard with embossed keys
- Internal memory: 14,8 Gb (expandible to 128 Gb)
- Multi languages user interface

## MEASUREMENT TYPES

- Effective value (RMS)
- Peak value (Pk)
- Peak-to-peak value (PP)

## MEASURING PERFORMANCE

- Bandwidth: 1-10 KHz
- FFT Resolution: Max 3200 lines
- Tacho: Up to 250000 rpm

## UNITS OF MEASUREMENT

- Acceleration: [g]
- Velocity: [mm/s] or [inch/s]
- Displacement: [ $\mu$ m] or [mils]
- Frequency: [Hz] or [Cpm]

## INPUT

- 1 measuring channels IEPE sensor, accelerometer and velomitor. With a specify cable pluggable on a BNC for read any dinamic signal max. 10V PkPk
- 1 photocell channel (velocity and angle reference)
- 1 MicroUSB 2.0 port for data transfer
- 1 jack plug for battery charger

## AMBIENT

- Temperature: from  $-20^{\circ}$  to  $+70^{\circ}$  C
- Air humidity: from 0 to 95% without condensate
- Protection: IP54

## POWER SUPPLY

- Long Life Battery: > 8 hours based on typical use
- Charging time: 2,5 hours for 80% recharge  
4 hours for 100% recharge
- Rechargeable 3100 mAh Lithium battery
- Power supply-battery charger for 100-240 V, 50/60 Hz (24 V, 1.5 A)

## CARRYING CASE DIMENSIONS AND WEIGHT

- Approx. 370(L) x 300 (H) x 115(D) 1800 g

