



## INTRODUCTION

An entry phone is a communication system which allows people to access a building or an enclosure without the owner having to go to open in person. These systems have evolved over the years and they have added elements to be more functional or aesthetic, such as lighting buttons to see who in the night or videocameras in order to see how is calling the door without the necessity to pick up the phone. These last with videocamera incorporated are the newest and the most used nowadays because they provide more confidence to the users. The video entry phone is a stand-alone intercom application system used to manage calls made at the entrance to a building with access controlled by audiovisual communication between the inside and outside. The most important feature of video entry phone is that it enables the person indoors to identify the visitor and, if they wish, engage in conversation and/or open the door to allow access to the person calling.



Certificate of Approval of the  
Quality Management System



European Union Certificate  
(total safety)



UL and CSA Regulations  
(All our products are manufactured according  
to current UL and CSA regulations)



Certificate of Approval of the  
Environmental Management System



Worlddidac Association  
Certificate of Membership

## GENERAL DESCRIPTION

The Audio and Video Entry Phone Application, "AEL-AD14", has been designed by EDIBON to show the functionality of an audio and video door entry system.

This application consists of a series of modules that allow the students to understand how to work the main elements of the Door Station Application (Audio and Video), "AEL-AD14". Video entry phone, video camera, door opener and video-interphone power supply module are devices located in panels with safety connectors in order to the students take experience cabling and testing these type of elements.

The "AEL-AD14" application includes the following elements:

- N-ALI02. Domestic Main Power Supply Module.
- N-POR04. Video Camera Module.
- N-POR05. Phone/Monitor Module.
- N-POR06. Door Opener Module.
- N-POR08. Video-Interphone Power Supply Module.

The application "AEL-AD14" can be mounted on rack (option A) or on rail (option B):

Option A:

This application needs the following racks.

- N-RACK-M.

Optionally the AEL-WBR, Electrical workbench (rack) can be supplied to place the rack/s.

Option B:

This application can be mounted on rail.

Optionally the AEL-WBC, Electrical workbench (rail) can be supplied to mount the modules.

The application "AEL-AD14" includes the following elements:

- **N-ALI02. Domestic Main Power Supply Module.**

Supply voltage (single-phase): 230 VAC, 1PH + N.

ON / OFF removable key.

Output voltage connections:

Two single-phase: 230 VAC.

Single-phase supply hose with connecting plug.

Differential magnetothermal 2 poles, 25 A, 30 mA AC 6 KA.

Emergency stop push-button.



N-ALI02

- **N-POR04. Video Camera Module.**

Input voltage: two terminals of 15 VDC.

Video camera.

Main hall entrance door button.

Adjust of the kind of bell and sound.

Two output terminal L (data and audio control).

One relay output NO (2 terminals).



N-POR04

- **N-POR05. Phone/Monitor Module.**

Input voltage: 2 terminals of 15 VDC.

One input terminal L (data and audio control).



N-POR05

- **N-POR06. Door Opener Module.**

Input voltage: two terminals of 12 VAC.

It can be connected to the control module.

Main hall entrance door lock.



N-POR06

- **N-POR08. Video-Interphone Power Supply Module.**

Input voltage: 2 terminals of 230 VAC (L and N).

Input frequency: 50/60 Hz.

Output voltage: 2 terminals of 15 VDC.

Output current: 1 A.



N-POR08

- **All necessary cables to realize the practical exercises are included.**

**Cables and accessories**, for normal operation.

**Manuals:**

This unit **is supplied with the following manuals:** Required services, Assembly and Installation, Starting-up, Safety, Maintenance & Practices manuals.

## EXERCISES AND PRACTICAL POSSIBILITIES

- |  |  |
|--|--|
| 1.- Verification of the operation of the main power supply.            | 4.- Real application of an audio and video entry phone system.           |
| 2.- Checking the working of the video-interphone power supply.         | 5.- Checking the communication between video interphone and telephone.   |
| 3.- Wiring the supplying telephone, video entry phone and door opener. | 6.- Verification of the operation of the door opener with the telephone. |

### REQUIRED SERVICES

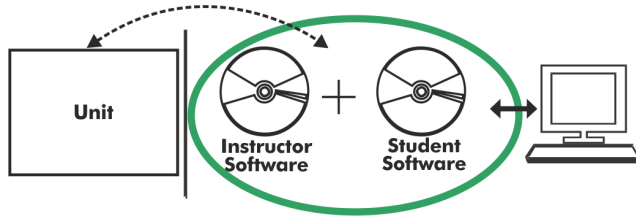
- |   |
|---|
| - Electrical supply: single-phase 200 VAC – 240 VAC/50 Hz or 110 VAC – 127 VAC/60 Hz, 1 kW. |
|---|

### DIMENSIONS AND WEIGHTS

- |  |
|--|
| AEL-AD14:  |
| - Dimensions: 640 x 320 x 670 mm approx.<br>(25.19 x 12.59 x 26.37 inches approx.) |
| - Weight: 60 kg approx.<br>(132 pounds approx.)                                    |

### SIMILAR UNITS AVAILABLE

- |  |                                  |
|--|----------------------------------|
| - AEL-AD14. Audio and Video Entry Phone Application. | <u>Offered in this catalog:</u>  |
| - AEL-AD13. Entry Phone Application.                 | <u>Offered in other catalog:</u> |

**AEL-AD14/ICAI. Interactive Computer Aided Instruction Software:**

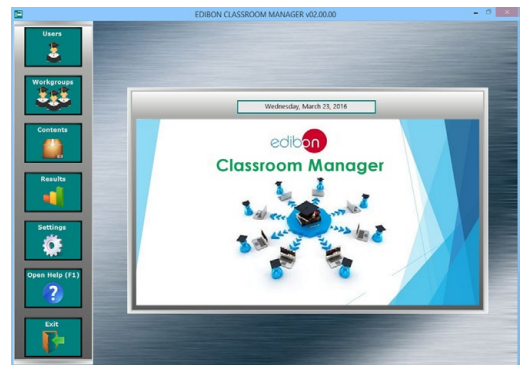
With no physical connection between unit and computer, this complete software package consists of an Instructor Software (EDIBON Classroom Manager -ECM-SOF) totally integrated with the Student Software (EDIBON Student Labsoft -ESL-SOF). Both are interconnected so that the teacher knows at any moment what is the theoretical and practical knowledge of the students.

Instructor Software**- ECM-SOF. EDIBON Classroom Manager (Instructor Software).**

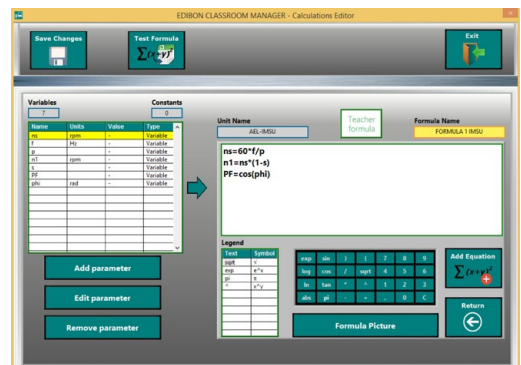
ECM-SOF is the application that allows the Instructor to register students, manage and assign tasks for workgroups, create own content to carry out Practical Exercises, choose one of the evaluation methods to check the Student knowledge and monitor the progression related to the planned tasks for individual students, workgroups, units, etc... so the teacher can know in real time the level of understanding of any student in the classroom.

Innovative features:

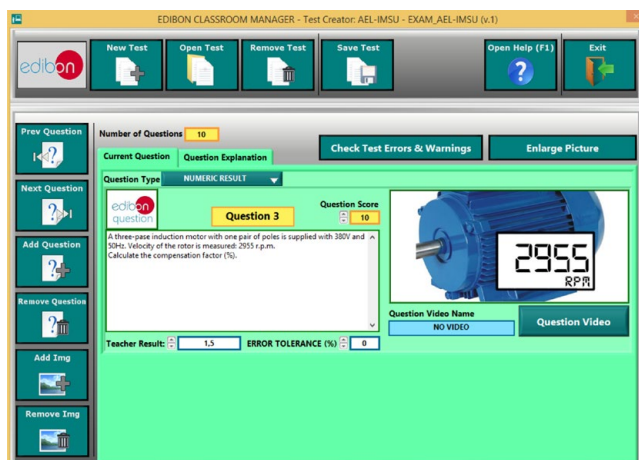
- User Data Base Management.
- Administration and assignment of Workgroup, Task and Training sessions.
- Creation and Integration of Practical Exercises and Multimedia Resources.
- Custom Design of Evaluation Methods.
- Creation and assignment of Formulas & Equations.
- Equation System Solver Engine.
- Updatable Contents.
- Report generation, User Progression Monitoring and Statistics.



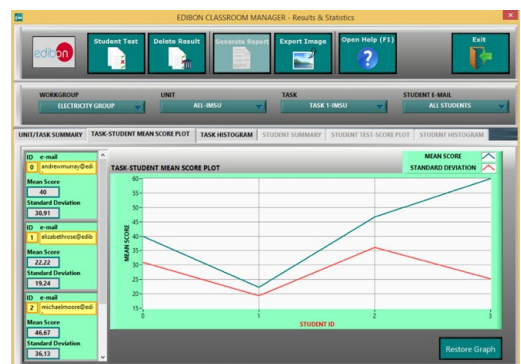
ECM-SOF. EDIBON Classroom Manager (Instructor Software) Application Main Screen



ECAL. EDIBON Calculations Program Package - Formula Editor Screen



ETTE. EDIBON Training Test & Exam Program Package - Main Screen with Numeric Result Question



ERS. EDIBON Results & Statistics Program Package - Student Scores Histogram

## - ESL-SOF. EDIBON Student Labsoft (Student Software).

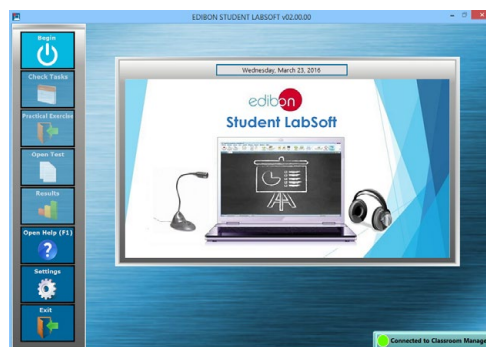
ESL-SOF is the application addressed to the Students that helps them to understand theoretical concepts by means of practical exercises and to prove their knowledge and progression by performing tests and calculations in addition to Multimedia Resources. Default planned tasks and an Open workgroup are provided by EDIBON to allow the students start working from the first session. Reports and statistics are available to know their progression at any time, as well as explanations for every exercise to reinforce the theoretically acquired technical knowledge.

Innovative features:

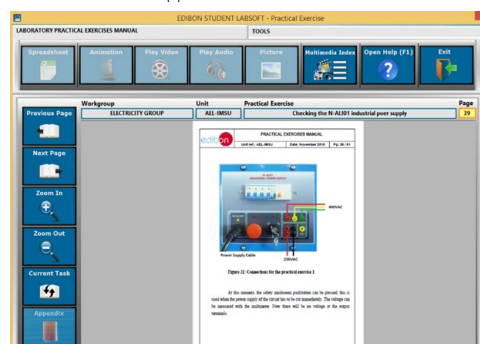
- Student Log-In & Self-Registration.
- Existing Tasks checking & Monitoring.
- Default contents & scheduled tasks available to be used from the first session.
- Practical Exercises accomplishment by following the Manual provided by EDIBON.
- Evaluation Methods to prove your knowledge and progression.
- Test self-correction.
- Calculations computing and plotting.
- Equation System Solver Engine.
- User Monitoring Learning & Printable Reports.
- Multimedia-Supported auxiliary resources.

For more information see ICAI catalogue. Click on the following link:

[www.edibon.com/en/interactive-computer-aided-instruction-software](http://www.edibon.com/en/interactive-computer-aided-instruction-software)



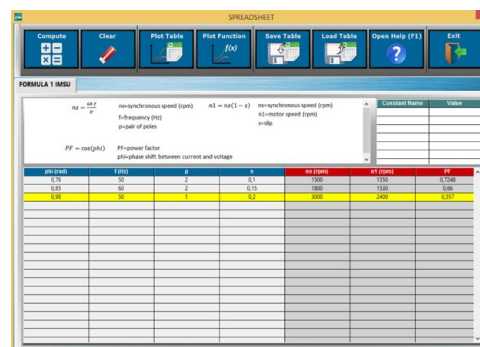
ESL-SOF. EDIBON Student LabSoft (Student Software)  
Application Main Screen



EPE. EDIBON Practical Exercise Program Package Main Screen



ERS. EDIBON Results & Statistics Program Package - Question Explanation



ECAL. EDIBON Calculations Program Package Main Screen

\* Specifications subject to change without previous notice, due to the convenience of improvement of the product.



C/ Julio Cervera, 10. Móstoles Tecnológico.  
28935 MÓSTOLES. (Madrid). ESPAÑA - SPAIN.  
Tel.: 34-91-6199363 Fax: 34-91-6198647  
E-mail: [edibon@edibon.com](mailto:edibon@edibon.com) Web: [www.edibon.com](http://www.edibon.com)

Edition: ED01/23  
Date: June/2023

REPRESENTATIVE:

