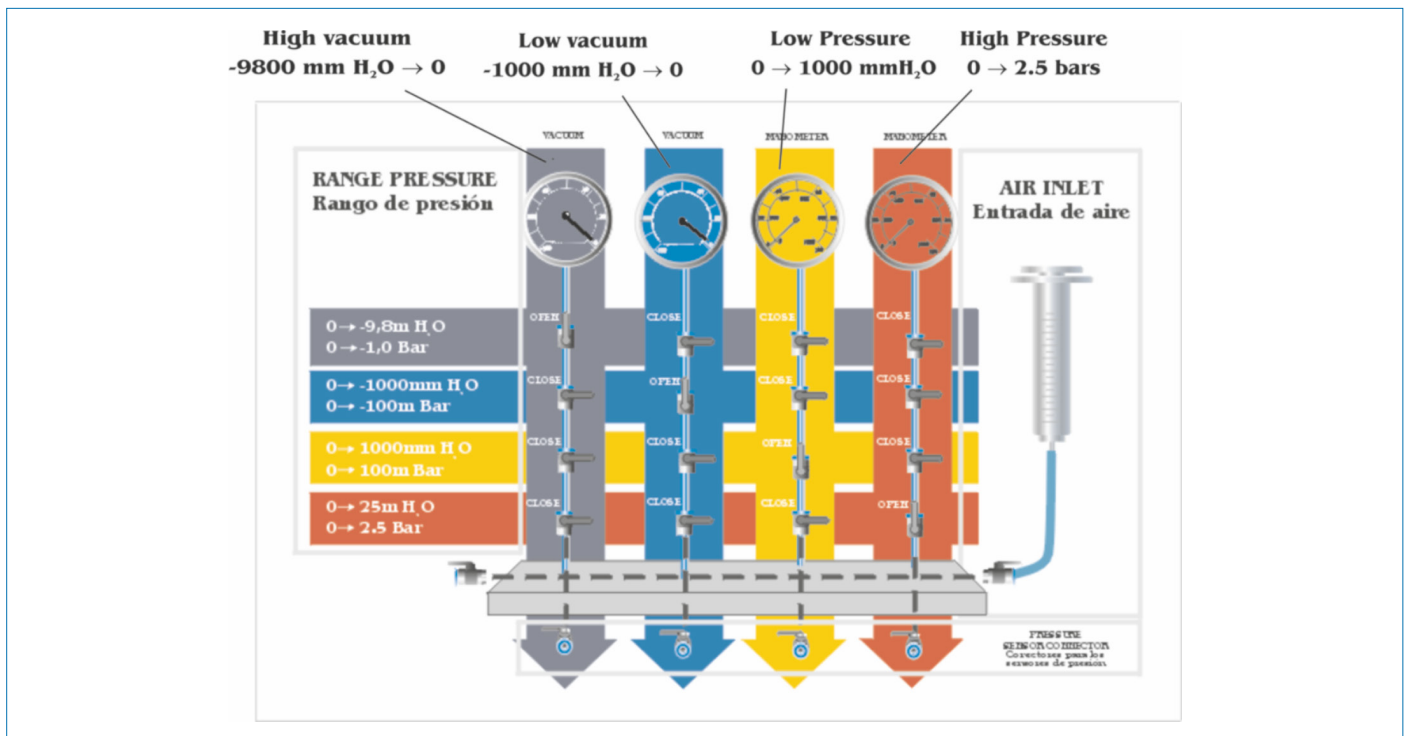




PROCESS DIAGRAM AND UNIT ELEMENTS ALLOCATION



ISO 9001: Quality Management (for Design, Manufacturing, Commercialization and After-sales service)



European Union Certificate (total safety)



Certificates ISO 14001 and ECO-Management and Audit Scheme (environmental management)



"Worlddidac Quality Charter" and Platinum Member of Worlddidac

INTRODUCTION

Pressure measurements are the most important measurements in industry; especially in continuous processes industries, such as chemical compounds processing and production. The amount of instruments employed to measure pressure can be much higher than the amount of instruments used in other types of instruments.

The Pressure Sensors Calibration System, "SCSP", is a unit with a very simple operation that allows to carry out different experiments which require measuring the pressure accurately, being it negative or positive.

GENERAL DESCRIPTION

The Pressure Sensors Calibration System, "SCSP", is mainly composed of two pressure manometers on one hand, one measuring up to 1000 millimeters of water or 100 millibars and the other one measuring up to 2.5 bars; and on the other hand, two vacuum gages or negative pressure manometers measuring up to 100 and 1000 millibars.

Furthermore, it includes a graduated cylinder which is used to measure water pressure in millimeters, and at the same time it allows to check the correct calibration of the unit's manometers.

Finally, there is a syringe on the other side to both inject pressure and create vacuum.

SPECIFICATIONS

Bench-top unit.

Anodized aluminum frame and panels made of painted steel.

The "SCSP" unit mainly consists of:

Vacuum-meter of range: -9800 [mmH₂O] – 0.

Vacuum-meter of range: -1000 [mmH₂O] – 0.

Manometer of range: 0 – 1000 [mmH₂O].

Manometer of range: 0 – 2.5 [bar].

Mobile Piston (syringe).

Eight valves.

Non-return valve.

Polyurethane tubes.

This system is supplied with atm, bar, psi, mmHg, mmH₂O, conversion tables.

Manuals: This unit is supplied with the following manuals: Required Services, Assembly and Installation, Starting-up, Safety, Maintenance & Practices Manuals.

EXERCISES AND PRACTICAL POSSIBILITIES

1.- Pressure measurements with a pressure gauge.

3.- Pressure measurements in water column.

2.- Pressure measurements with a vacuum gauge.

4.- Calibration of pressure gauges.

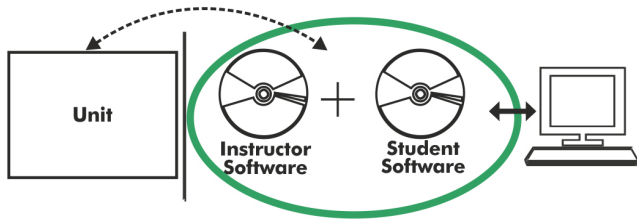
DIMENSIONS AND WEIGHTS

SCSP:

- Dimensions: 720 x 300 x 570 mm approx. (28.35 x 11.81 x 22.44 inches approx.).

- Weight: 15 Kg approx. (33 pounds approx.).

SCSP/ICAI. Interactive Computer Aided Instruction Software:



With no physical connection between unit and computer, this complete software package consists of an Instructor Software (EDIBON Classroom Manager -ECM-SOF) totally integrated with the Student Software (EDIBON Student Labsoft -ESL-SOF). Both are interconnected so that the teacher knows at any moment what is the theoretical and practical knowledge of the students.

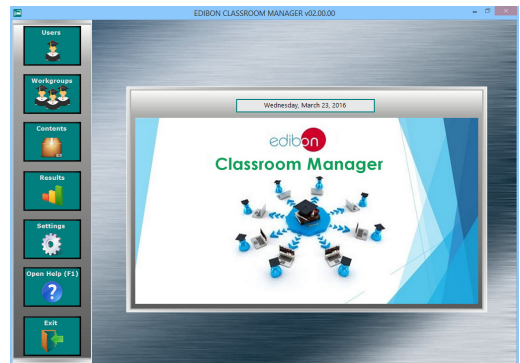
Instructor Software

- ECM-SOF. EDIBON Classroom Manager (Instructor Software).

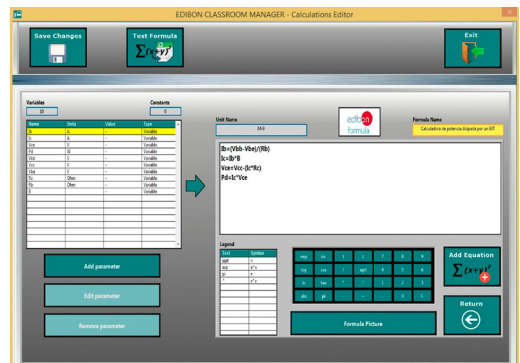
ECM-SOF is the application that allows the Instructor to register students, manage and assign tasks for workgroups, create own content to carry out Practical Exercises, choose one of the evaluation methods to check the Student knowledge and monitor the progression related to the planned tasks for individual students, workgroups, units, etc... so the teacher can know in real time the level of understanding of any student in the classroom.

Innovative features:

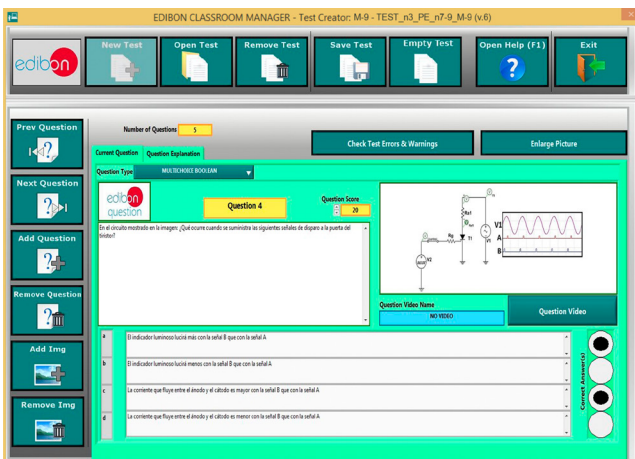
- User Data Base Management.
- Administration and assignment of Workgroup, Task and Training sessions.
- Creation and Integration of Practical Exercises and Multimedia Resources.
- Custom Design of Evaluation Methods.
- Creation and assignment of Formulas & Equations.
- Equation System Solver Engine.
- Updatable Contents.
- Report generation, User Progression Monitoring and Statistics.



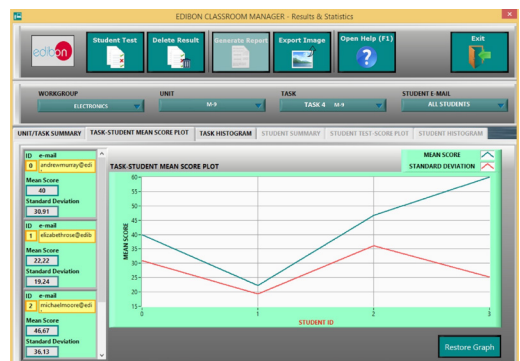
ECM-SOF. EDIBON Classroom Manager (Instructor Software) Application Main Screen



ECAL. EDIBON Calculations Program Package - Formula Editor Screen



ETTE. EDIBON Training Test & Exam Program Package - Main Screen with Numeric Result Question



ERS. EDIBON Results & Statistics Program Package - Student Scores Histogram

Optional
Student Software

- **ESL-SOF. EDIBON Student Labsoft (Student Software).**

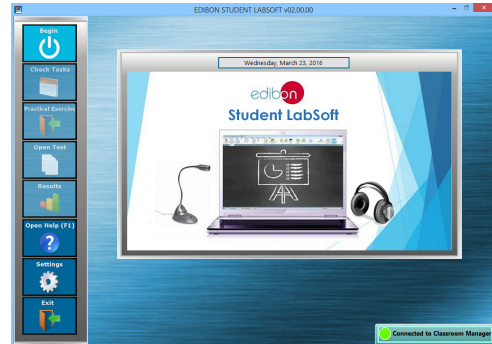
ESL-SOF is the application addressed to the Students that helps them to understand theoretical concepts by means of practical exercises and to prove their knowledge and progression by performing tests and calculations in addition to Multimedia Resources. Default planned tasks and an Open workgroup are provided by EDIBON to allow the students start working from the first session. Reports and statistics are available to know their progression at any time, as well as explanations for every exercise to reinforce the theoretically acquired technical knowledge.

Innovative features:

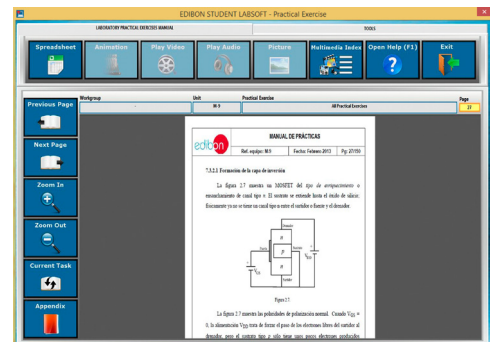
- **Student Log-In & Self-Registration.**
- **Existing Tasks checking & Monitoring.**
- **Default contents & scheduled tasks available to be used from the first session.**
- **Practical Exercises accomplishment by following the Manual provided by EDIBON.**
- **Evaluation Methods to prove your knowledge and progression.**
- **Test self-correction.**
- **Calculations computing and plotting.**
- **Equation System Solver Engine.**
- **User Monitoring Learning & Printable Reports.**
- **Multimedia-Supported auxiliary resources.**

For more information see ICAI catalogue. Click on the following link:

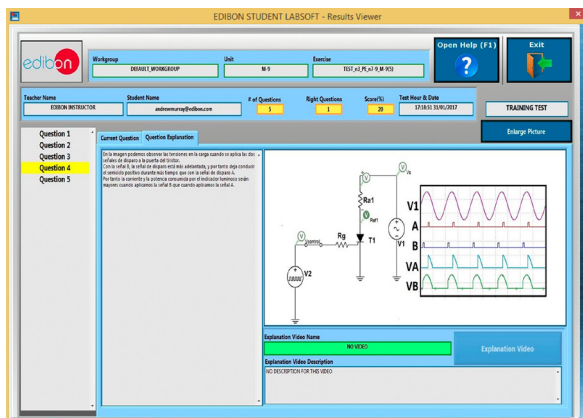
www.edibon.com/en/files/expansion/ICAI/catalog



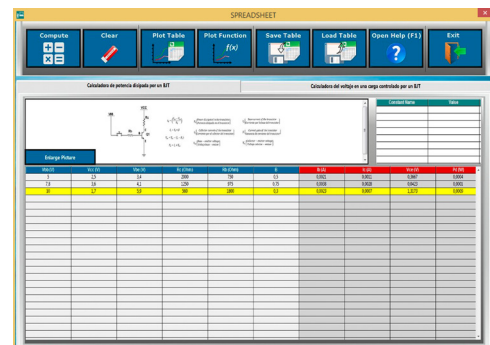
ESL-SOF. EDIBON Student LabSoft (Student Software) Application Main Screen



EPE. EDIBON Practical Exercise Program Package Main Screen



ERS. EDIBON Results & Statistics Program Package - Question Explanation



ECAL. EDIBON Calculations Program Package Main Screen

* Specifications subject to change without previous notice, due to the convenience of improvement of the product.



C/ Julio Cervera, 10-12-14. Móstoles Tecnológico.
28935 MÓSTOLES. (Madrid). ESPAÑA - SPAIN.
Tel.: 34-91-6199363 Fax: 34-91-6198647
E-mail: edibon@edibon.com Web: www.edibon.com

Edition: ED01/21
Date: January/2021

REPRESENTATIVE:

